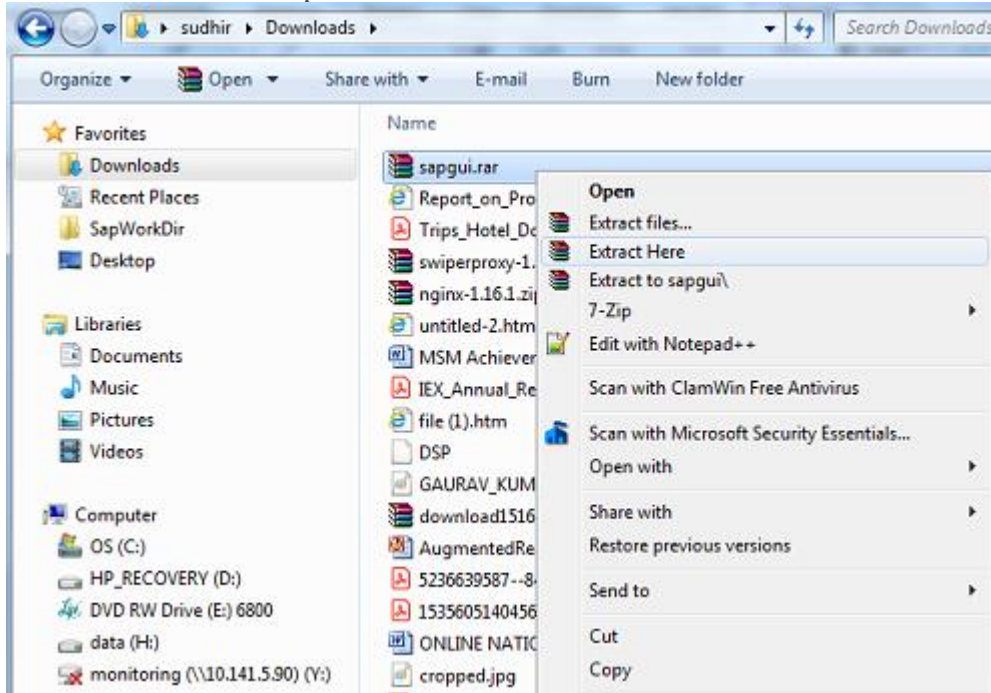


# How to install SAP GUI 750

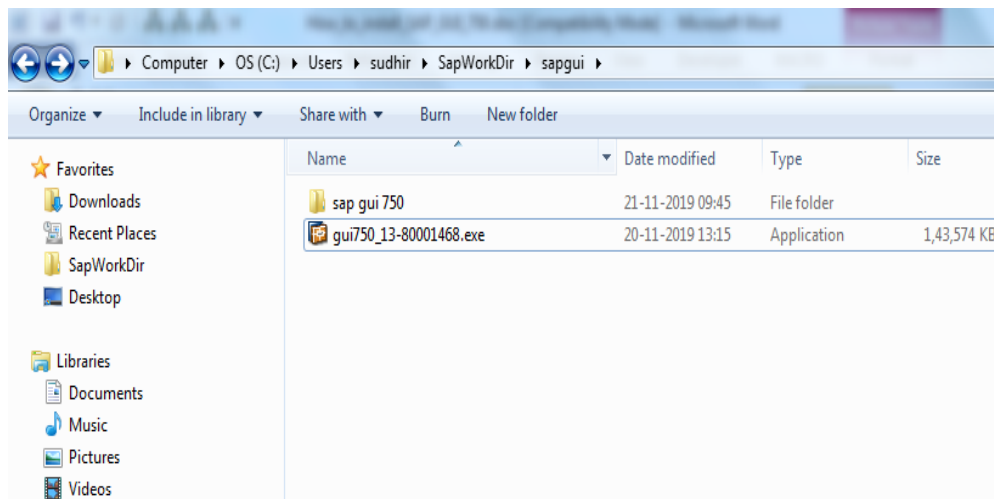
To install the [SAP logon](#) 750, follow below SAP installation steps:

## 1. Download and unzip the installer

To download, [Click Here](#). Once downloaded, start unzipping the file by **right clicking** on the archive in the file explorer.

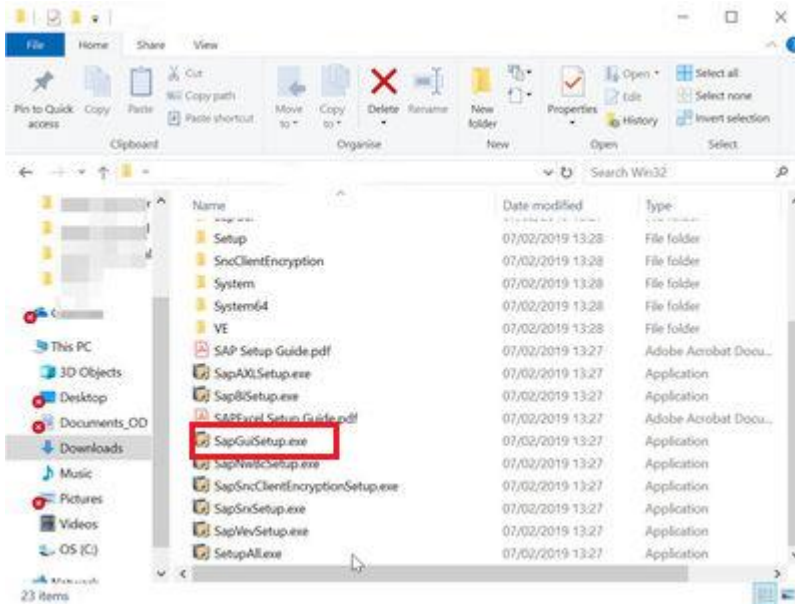


Upon unzip, One folder(**sap gui 750**) and one file (**gui750\_13-80001468.exe**) will be created in the current directory.



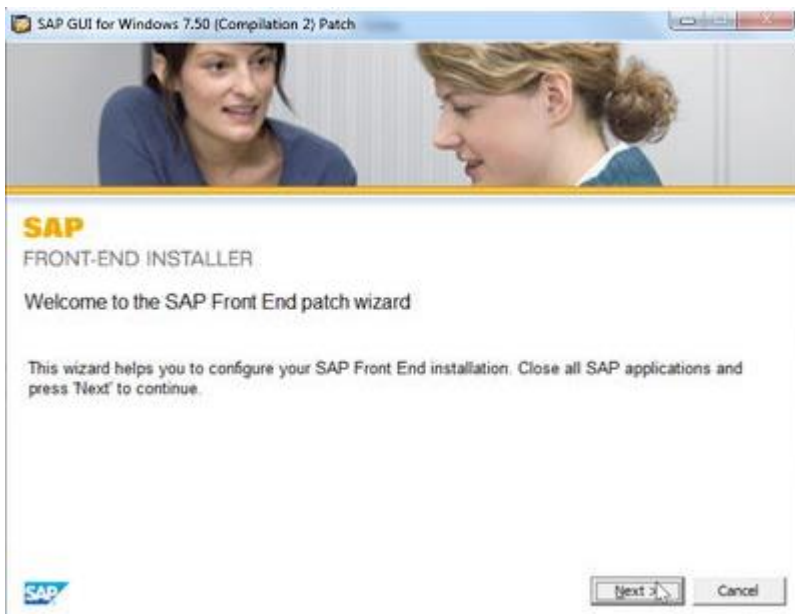
2. Start the installer **SapGuiSetup.exe**

Open extracted folder(sap gui 750) and Click on **SapGuiSetup** exe file and run (as Administrator) the executable file to start the SAP GUI 750 installation.



3. Follow the installer wizard instructions

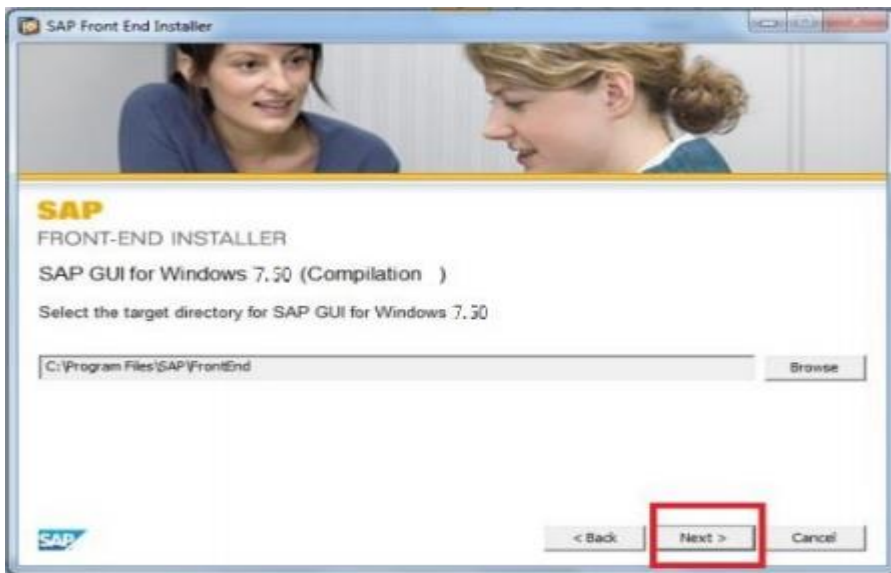
Start by clicking next.

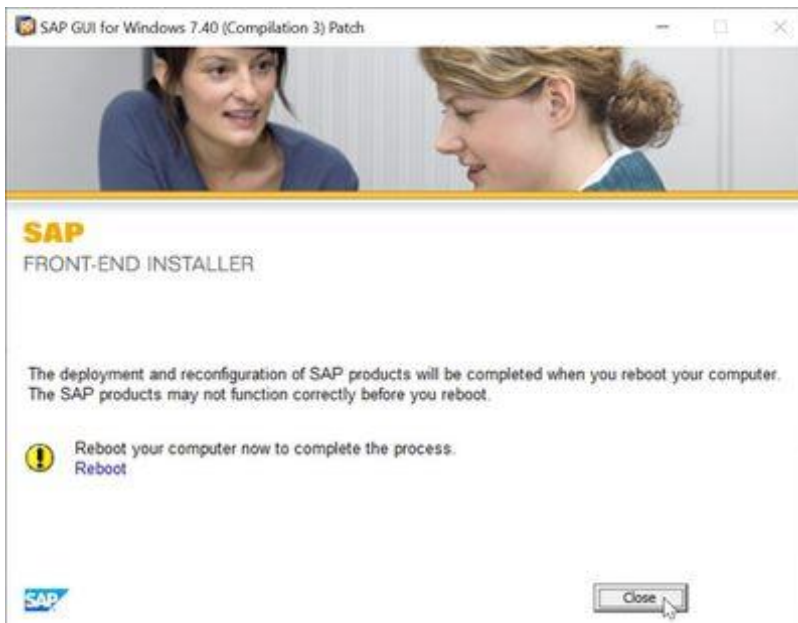
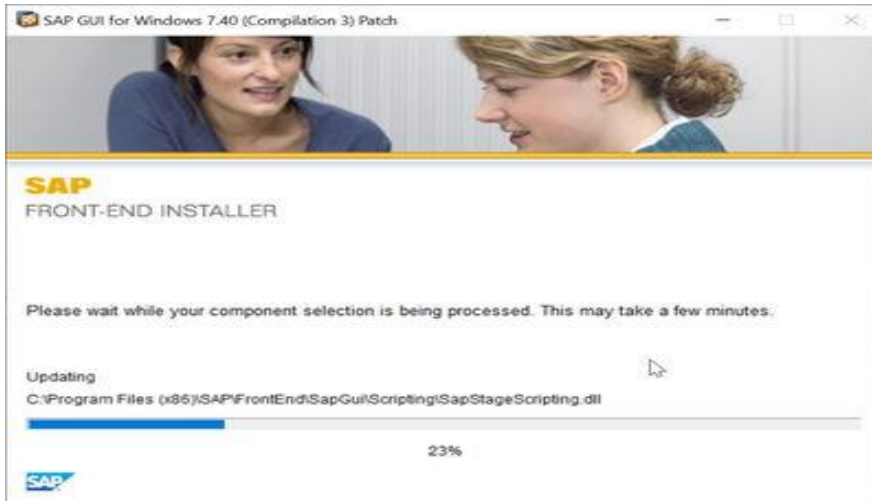


4. Select 'SAP GUI for Windows 7.50'



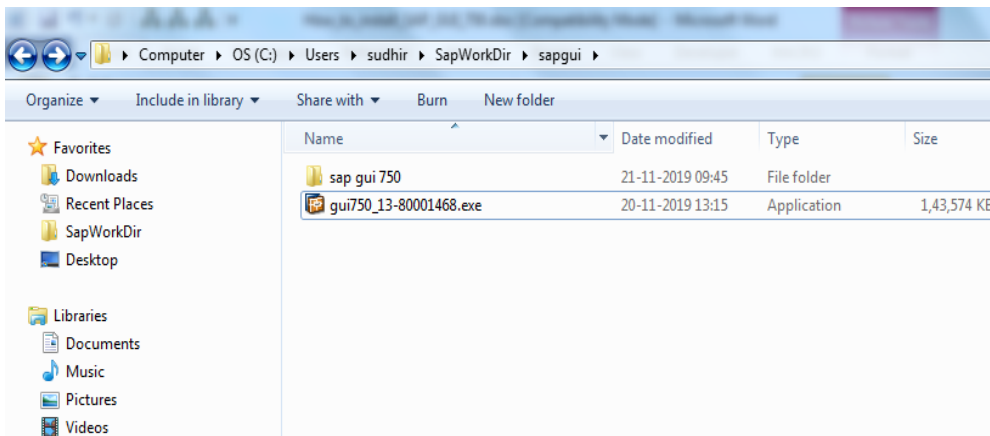
\*\*\*If any JAVA related error comes, please download and install JRE from [www.dsp.com](http://www.dsp.com) ----Download----Software---JRE or internet.



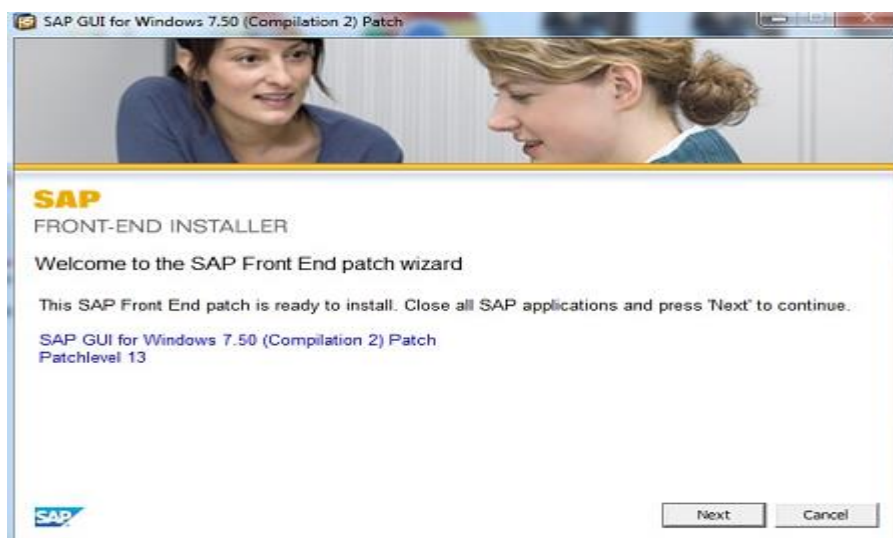
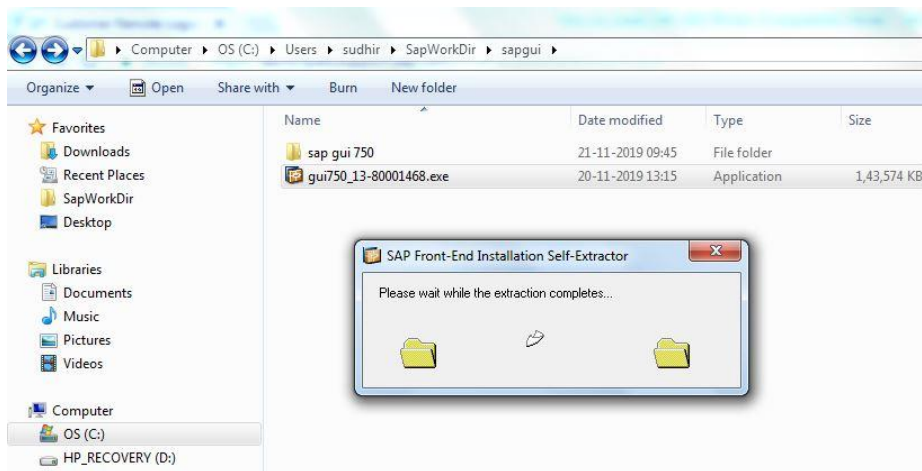


5. **Restart computer**

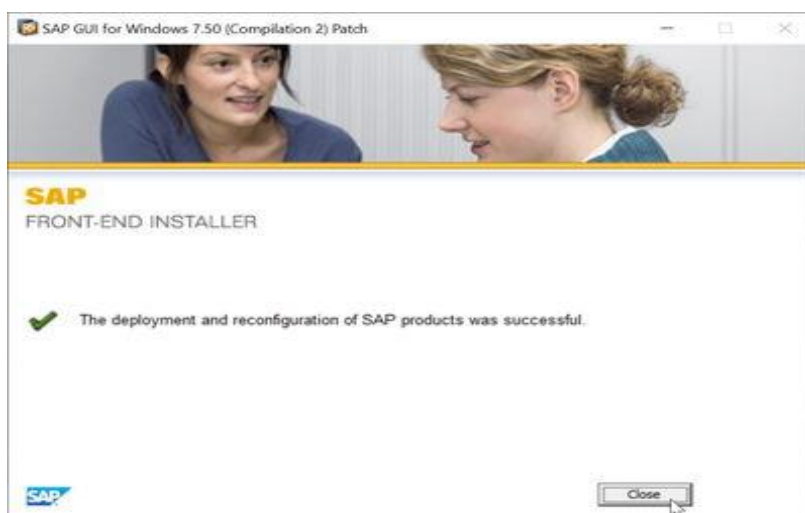
6. **Run patch executable file as Administrator**



Double click and run patch executable file **gui750\_13-80001468.exe**



Start by clicking **Next**.



Click on close. **Installation Complete.**

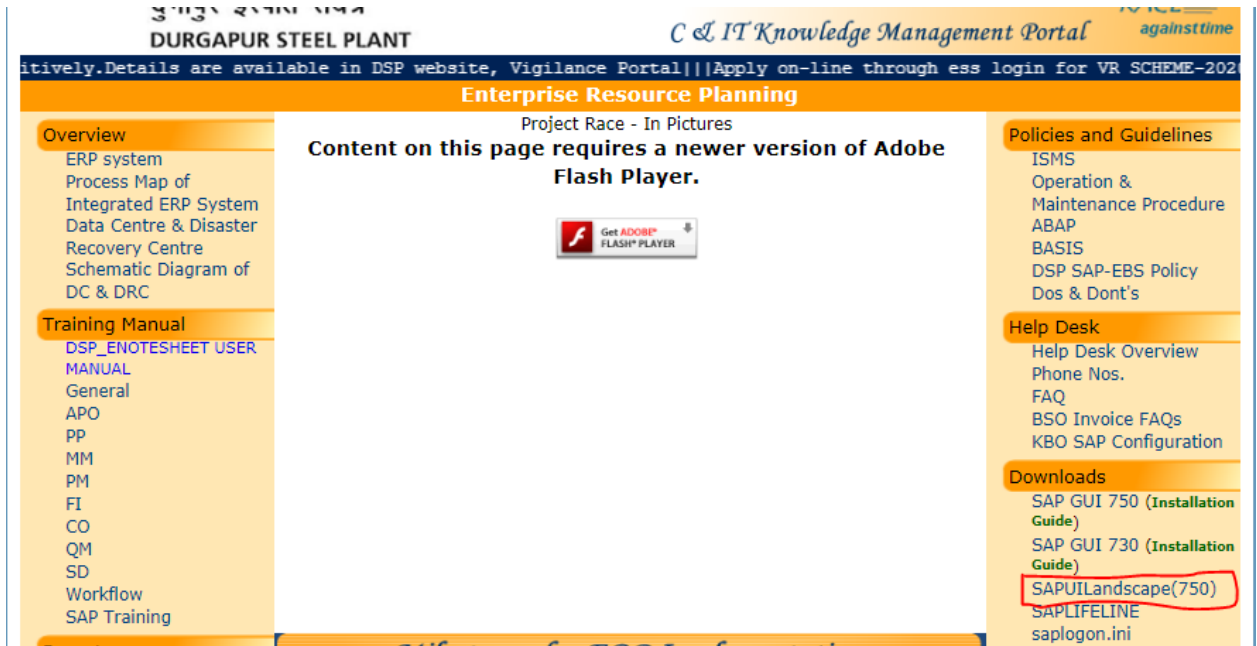
\*\*\*Double Click on **SAP Logon PAD**

## Setting for SAP Logon PAD Connections

A. Download SAP Connection files from following link (by pressing **Ctrl** and **click**) :

[Download SAPUI.exe](#)

or alternatively go to [www.dsp.com](http://www.dsp.com) ---> **C&IT** ---> **Knowledge Management** ---> right click on **SAPUILandscape(750)** and save it in **Desktop**. Right click on **SAPUI.exe** and Run/extract files.



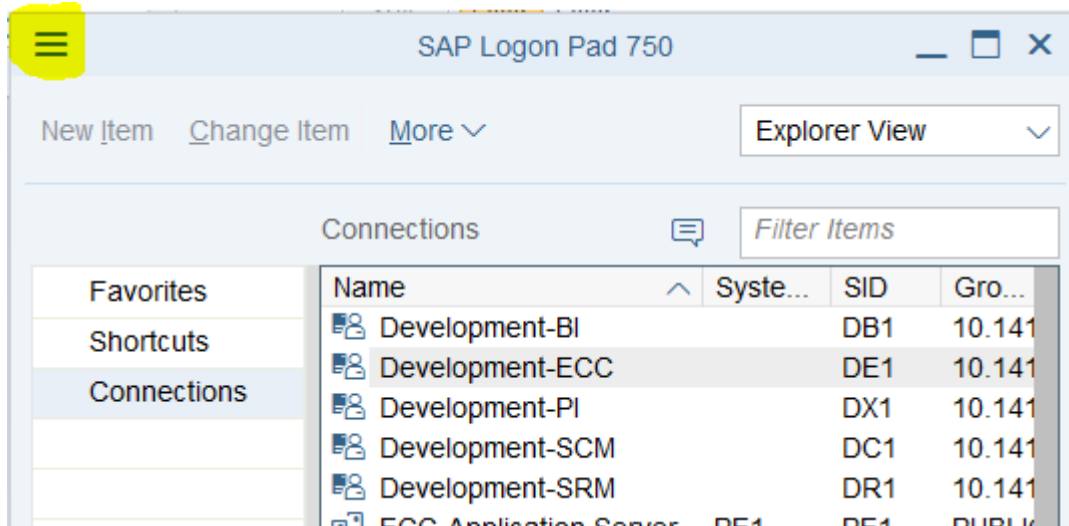
B. Download SAPLIFELINE from below link (by pressing **Ctrl** and **click**) :

[Download saplifeline.exe](#)

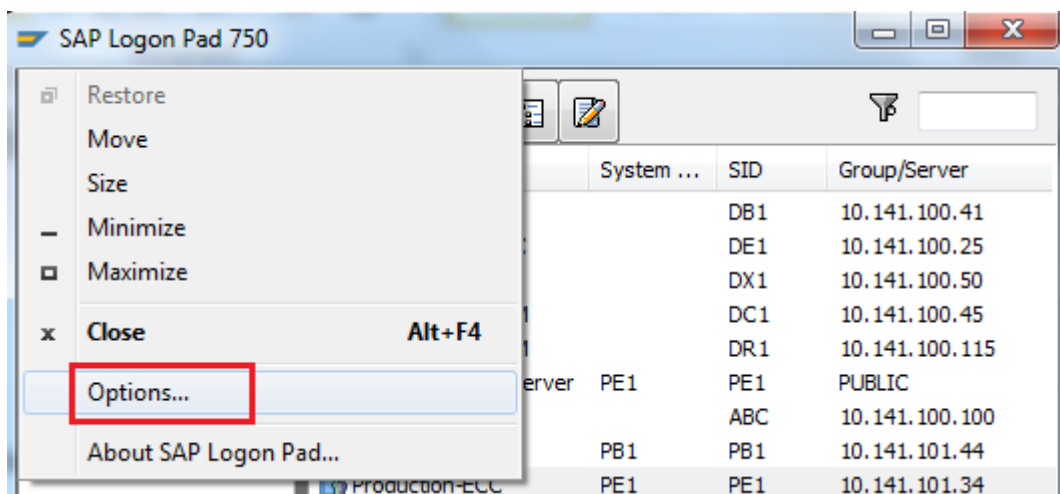
And Now right click on **saplifeline.exe** and Run/extract files.

## Setting to Disable Security Alert

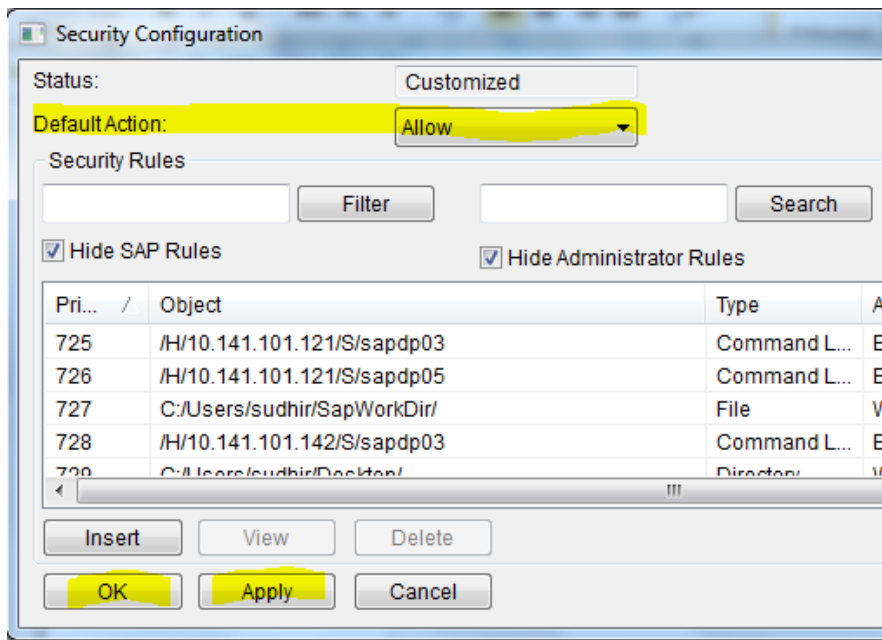
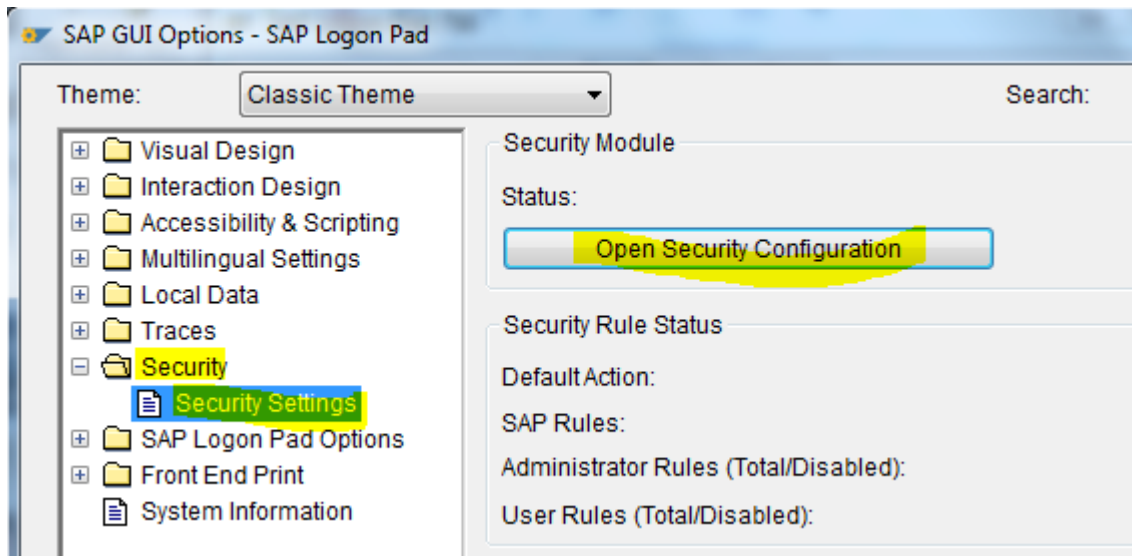
Now double click on **SAP logon** icon in Desktop.  
Click on top left corner of SAP Logon Pad



Click on **Options**



Click on **Security(double click)** → **Security Settings**----> **Open Security Configuration** button



In **Default Action** select “**Allow**”. Then click on **Apply** and **OK** and **OK**.

We are done now.